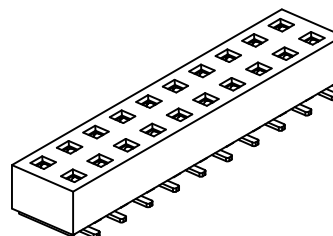
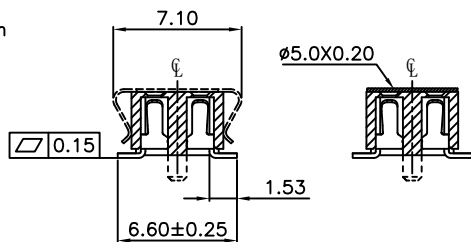
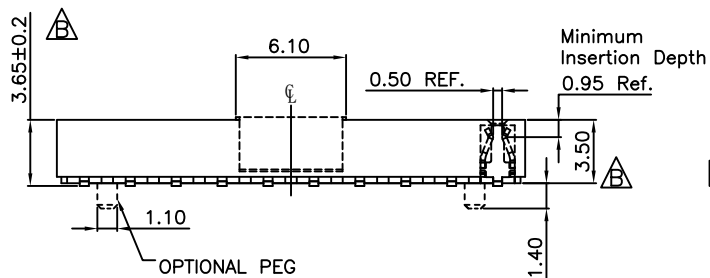


RECOMMENDED PCB LAYOUT



CONTACTS	DIMENSIONS	
	A	B
04	2.54	6.35
06	5.08	8.89
08	7.62	11.43
10	10.16	13.97
12	12.70	16.51
14	15.24	19.05
16	17.78	21.59
18	20.32	24.13
20	22.86	26.67
22	25.40	29.21
24	27.94	31.75
26	30.48	34.29
28	33.02	36.83
30	35.56	39.37
32	38.10	41.91
34	40.64	44.45
36	43.18	46.99
38	45.72	49.53
40	48.26	52.07
42	50.80	54.61
44	53.34	57.15
46	55.88	59.69
48	58.42	62.23
50	60.96	64.77
52	63.50	67.31
54	66.04	69.85
56	68.58	72.39
68	71.12	74.93
60	73.66	77.47
62	76.20	80.01
64	78.74	82.55
66	81.28	85.09
68	83.82	87.63
70	86.36	90.17
72	88.90	92.71
74	91.44	95.25
76	93.98	97.79
78	96.52	100.33
80	99.06	102.87

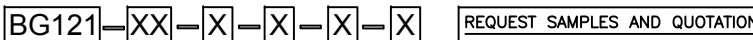
SPECIFICATIONS 规格

CURRENT RATING 电流额定值: 3 AMP  
 INSULATOR RESISTANCE 绝缘电阻值: 1000 MΩ Min.  
 CONTACT RESISTANCE 接触电阻值: 20mΩ Max.  
 DIELECTRIC WITHSTANDING 耐电压: AC 600 V  
 OPERATING TEMPERATURE 工作温度: -40°C TO +105°C  
 CONTACT MATERIAL 端子物料: COPPER ALLOY  
 INSULATOR MATERIAL 绝缘体物料:  
 STANDARD 标准物料: POLYAMIDE 聚酰胺, NYLON 6T, UL 94-V0  
 OPTIONS 可选物料: POLYESTER 聚酯, LCP, UL 94-V0  
 SOLDERING PROCESS 可焊性:  
 NYLON 6T (STANDARD 标准物料) -  
 IR REFLOW 回流焊: 260°C for 10 sec.  
 WAVE 波峰焊: 230°C for 5-10 sec.  
 MANUAL SOLDER 人工焊接: 350°C for 3-5 sec  
 LCP (OPTION 可选物料) -  
 IR REFLOW 回流焊: 260°C for 10 sec.  
 WAVE 波峰焊: 250°C for 5-10 sec.  
 MANUAL SOLDER 人工焊接: 350°C for 3-5 sec

MATES WITH 配套之母座 (SUBJECT TO PIN LENGTH 在端子长度适合的条件下):  
 BG025 BG040 BG041 BG045 BG050  
 BG065 BG070 BG085

By	BC	ASE
DETAIL	DRAWING RELEASE	PROFILE AMMENDED
REV DATE	A 17/04/07	B 26/10/10

Ordering Grid



No. of Contacts 04 to 80

A = Gold Flash All Over  
 B = Selective Gold Flash Contact Area/  
 Tin On Tail  
 C = Tin All Over  
 G = 10µ" Gold Contact Area/Tin On Tail  
 I = 30µ" Gold Contact Area/Tin On Tail  
**Standard = Gold Flash All Over**

Insulator Material  
**N = Nylon 6T (Standard)**  
 L = LCP  
 Locating Peg  
 0 = No Peg  
**1 = With Peg (Standard)**

Packing  
**C = Tape and Reel with Film (Standard)**  
 B = Tape and Reel with Cap  
 D = Tube  
 E = Tube with Cap  
 F = Tube with Film

For bottom entry applications, stringent soldering control & pin alignment are required as lead to pad misalignment could cause incorrect mating.

Tolerances (Except as noted)		Part Number:-	Date:-
Dimensions in mm		BG121	17 APR 07
X ± 0.30	X* ± 5°	Description:-	
X.X ± 0.25	.X* ± 3°	2.54mm PITCH SOCKET, DUAL ROW, SURFACE MOUNT, VERTICAL, DUAL ENTRY	
X.XX ± 0.15	.XX* ± 2°	© THIS DRAWING IS CONFIDENTIAL AND MUST NOT BE COPIED OR DISCLOSED WITHOUT WRITTEN CONSENT	
X.XXX ± 0.10	.XXX* ± 1°	Third Angle Projection	



**GCT**

www.globalconnectortechology.com

Scale	Revision	Material	Drawn by	Sheet No.
NTS	B	See Note	BC	E & OE 1/1