



---

# PRODUCT BROCHURE

**LINK-PP**

LINK-PP INT'L TECHNOLOGY CO., LIMITED

**Pioneer of the IOT Components**

**LINK-PP** is a professional designer and manufacturer for magnetic components of LOT. Founded in 1997, owning 1100 people and 9200k monthly capability, as well as advanced production equipment and precision cutting-edge network analysis testing instruments imported abroad , we have ISO9001:2015 international quality system certification, ROHS environmental certification, UL, Reach, and ISO14001:2015 environmental certification system .

## LINK-PP PARTNERS



SIEMENS



FLEXTRONICS X

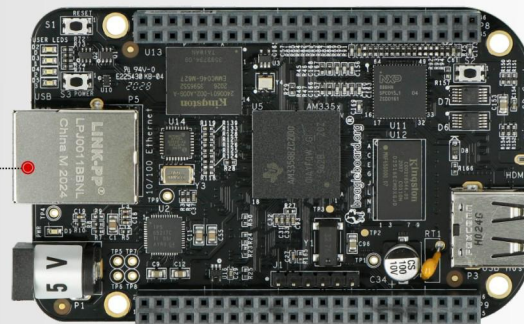


NEC

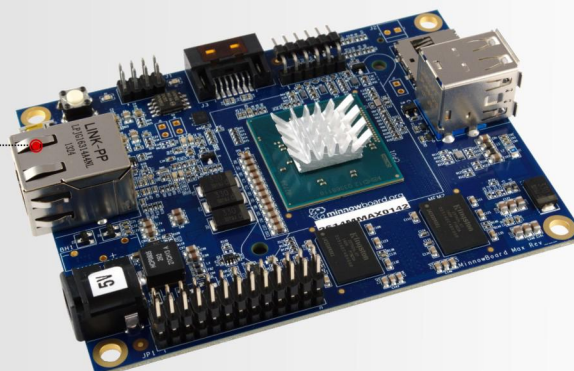


JABIL

LINK-PP PN:LPJ0011BBNL  
is used in **BeagleBone Board**



**Intel MinnowBoard MAX**  
Supported by LINK-PP Magnetic  
RJ45 PN#LPJG16314A4NL





# Magnetic Telecom Networking Components & Optical Transceiver Modules

- Prototyping service design
- Strong global support and supply chain
- Industrial quality and process control

## Application Internet of Things



### Medical

Surgical Equipment / Patient Care /  
The Handheld Device / Operation Generator /  
Home Dialysis / Machine



### Security

Alarm / Smart Camera / Monitoring System /  
Intercom / Entrance Guard System



### Networking

Router / Server / Switches /  
Network Firewall / SMPS



### Telecom

Set-top Box / Smart Home /  
Smart Meters / Satellite /  
New Energy / Solar Inverter



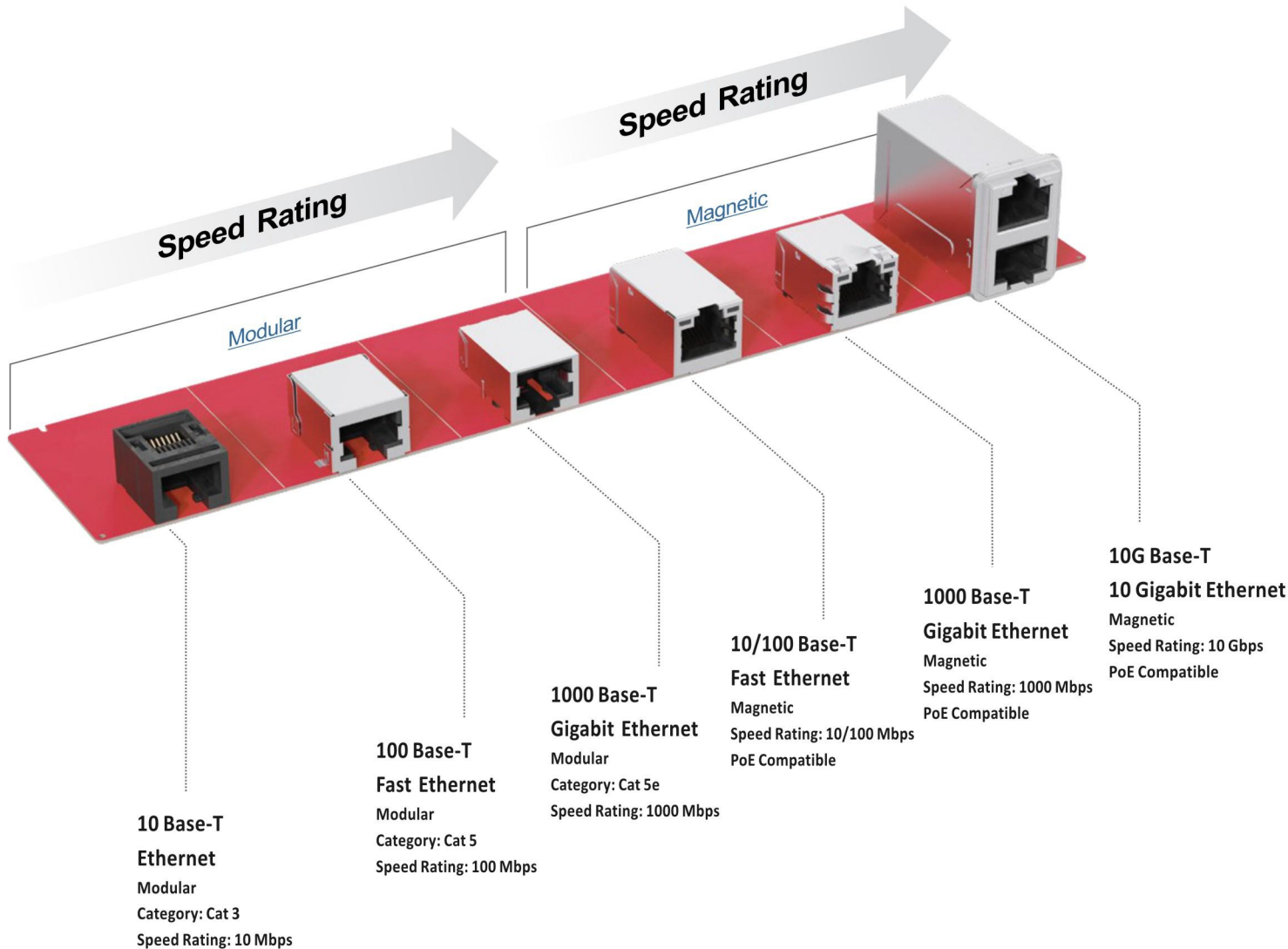
### Consumer

Digital Camera / Video Recorder /  
Media Player / Game Controller /  
TV



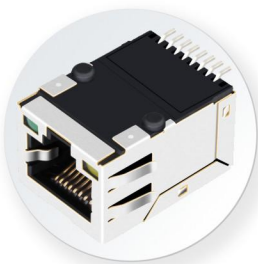
### Industrial I/O

Industrial PC / Embedded Main Board /  
Ethernet Control / Automation /  
Fieldbus System / I/O Controller



# Integrated RJ45 Connectors

Experience seamless connectivity and redefine network performance.



**SMT  
RJ45 Connector**

- \* 10/100M, 100/1000M
- \* 2.5G/5G/10G
- \* Tab up or Tab down
- \* LED optional
- \* PoE/PoE+/PoE++ optional
- \* ROHS compliant



**Low-Profile  
RJ45 Connector**

- \* 10/100M, 100/1000M
- \* 2.5G/5G/10G
- \* Tab up or Tab down
- \* LED optional
- \* PoE/PoE+/PoE++ optional
- \* ROHS compliant



**Vertical  
RJ45 Connector**

- \* 10/100M, 100/1000M
- \* 2.5G/5G/10G
- \* LED optional
- \* PoE/PoE+/PoE++ optional
- \* ROHS compliant



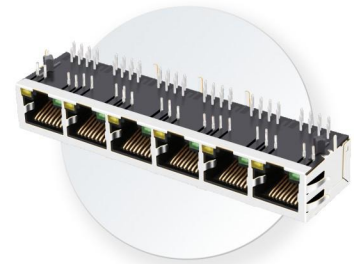
**Mid-mount  
RJ45 Connector**

- \* 10/100M, 100/1000M
- \* 2.5G/5G/10G
- \* Tab up or Tab down
- \* LED optional
- \* PoE/PoE+/PoE++ optional
- \* ROHS compliant



**Rj45 Connector  
with USB**

- \* 10/100M, 100/1000M
- \* 2.5G/5G/10G
- \* Single or Dual USB2.0/3.0/3.1
- \* LED optional
- \* PoE/PoE+/PoE++ optional
- \* ROHS compliant



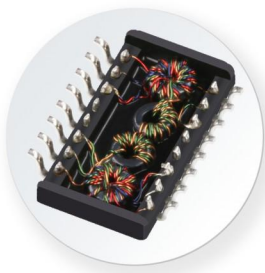
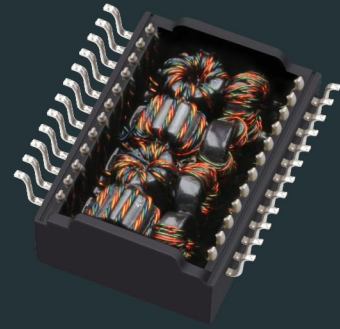
**Multi-Port  
RJ45 Connector**

- \* 10/100M, 100/1000M
- \* 2.5G/5G/10G
- \* 1XN /Stacked RJ45 (2XN)
- \* LED optional
- \* PoE/PoE+/PoE++ optional
- \* ROHS compliant



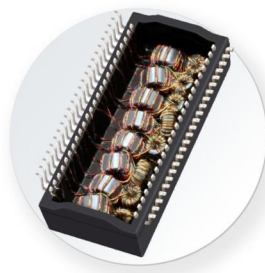
# LAN Transformers

Elevate network infrastructure  
transform signals and empower  
connections.



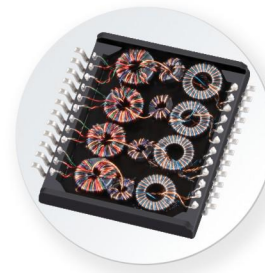
## Single port SMT LAN Transformer

- \* 10/100M (8PIN/12PIN/16PIN)
- \* 1G/2.5G/5G/10G (24PIN)
- \* PoE/PoE+/PoE++ optional
- \* Surge Protection (2KV-6KV)
- \* ROHS compliant



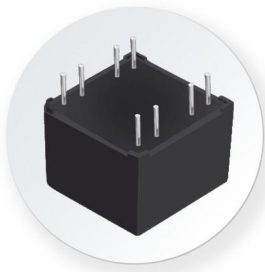
## Dual ports SMT LAN Transformer

- \* 1G/2.5G/5G/10G  
(40PIN/48PIN/50PIN)
- \* PoE/PoE+/PoE++ optional
- \* Surge Protection (2KV-6KV)
- \* ROHS compliant



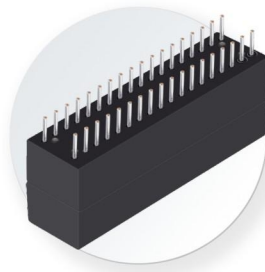
## Low-Profile SMT LAN Transformer

- \* 10/100M (8PIN/12PIN/16PIN)
- \* 1G/2.5G/5G/10G (24PIN)
- \* With or without PoE
- \* Surge Protection (2KV-6KV)
- \* ROHS compliant



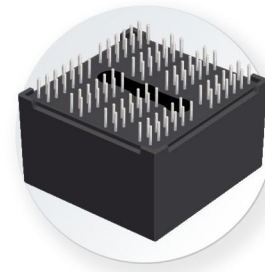
## Single port DIP LAN Transformer

- \* 10/100M (8PIN/12PIN/16PIN)
- \* 1G/2.5G/5G/10G (20PIN/24PIN)
- \* PoE/PoE+/PoE++ optional
- \* Surge Protection (2KV-6KV)
- \* ROHS compliant



## Dual ports DIP LAN Transformer

- \* 1G/2.5G/5G/10G  
(36PIN/40PIN/48PIN/50PIN)
- \* PoE/PoE+/PoE++ optional
- \* Surge Protection (2KV-6KV)
- \* ROHS compliant

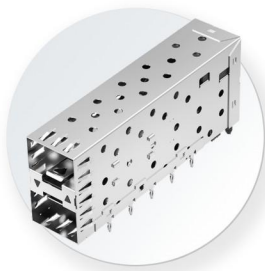
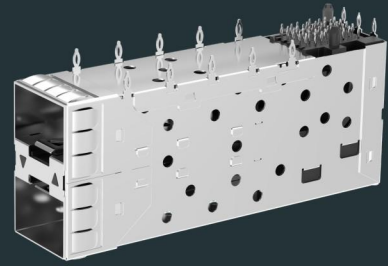


## Quad ports DIP LAN Transformer

- \* 1G/2.5G/5G/10G  
(72PIN/88PIN/96PIN)
- \* PoE/PoE+/PoE++ optional
- \* Surge Protection (2KV-6KV)
- \* ROHS compliant

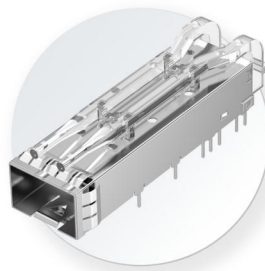
# Fiber Optic Cages & Connectors

Set new standards in optical networking and unlock the future of fiber connectivity.



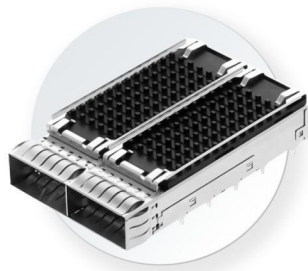
## SFP/SFP+ Cages & Connectors

- \* 1XN, 2XN
- \* 1000Mb/s, 2.5Gb/s, 10Gb/s
- \* Light Pipe optional
- \* Heat Sink optional
- \* Press-Fit or Soldering
- \* RoHS compliant



## SFP28/ZSFP+ Cages & Connectors

- \* 1XN, 2XN
- \* 25Gb/s, 32Gb/s
- \* Light Pipe optional
- \* Heat Sink optional
- \* Press-Fit or Soldering
- \* RoHS compliant



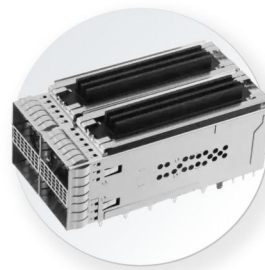
## QSFP+ Cages & Connectors

- \* 1XN, 2XN
- \* 40Gb/s
- \* Light Pipe optional
- \* Heat Sink optional
- \* Press-Fit or Soldering
- \* RoHS compliant



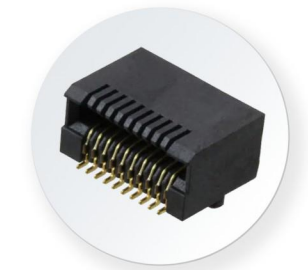
## QSFP28/ZQSFP+ Cages & Connectors

- \* 1XN, 2XN
- \* 100Gb/s
- \* Light Pipe optional
- \* Heat Sink optional
- \* Press-Fit or Soldering
- \* RoHS compliant



## QSFP-DD Cages & Connectors

- \* 1XN, 2XN
- \* 400Gb/s
- \* Light Pipe optional
- \* Heat Sink optional
- \* Press-Fit or Soldering
- \* RoHS compliant

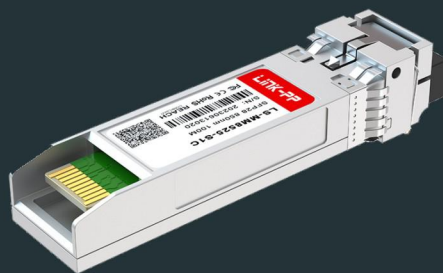


## Single Connector

- \* SFP/SFP+/SFP28/QSFP+/QSFP28
- \* 10G/25G/40G/100G
- \* SMT type
- \* RoHS compliant

# Optics Transceivers SFP Modules

Speed meets precision  
empower your data  
transmission and reliability.



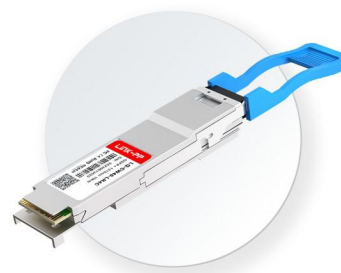
## Copper SFP/SFP+ Transceiver

- \* 1000Mb/s, 2.5Gb/s, 10Gb/s
- \* Compliant with SFP MSA and SFF-8472
- \* Compact RJ-45 connector assembly
- \* 1000Mb/s supports link up to 100m
- \* 10Gb/s link up to 80m
- \* RoHS compliant



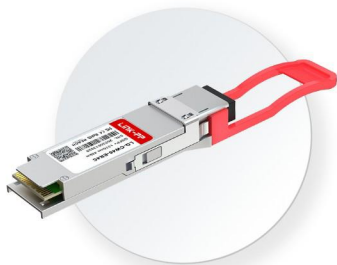
## SFP/SFP+/SFP28 Transceiver

- \* 155Mb/s — 32Gb/s
- \* Compliant with SFP MSA and SFF-8472
- \* Duplex LC or simplex LC/SC connector
- \* Up to 120KM distance optional
- \* CWDM/DWDM available
- \* RoHS compliant



## QSFP+/QSFP28/QSFP56 Transceiver

- \* 40Gb/s, 100Gb/s, 200Gb/s
- \* Compliant with QSFP+ MSA and SFF-8436(or CMIS)
- \* Duplex LC, single/multimode MPO-12 optical Conn
- \* Up to 80km distance optional
- \* Low power consumption
- \* RoHS compliant



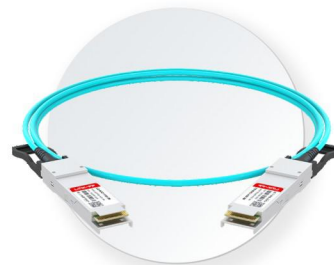
## QSFP-DD/OSFP Transceiver

- \* 400Gb/s, 800Gb/s
- \* Compliant with IEEE Std 802.3bs
- \* Compliant with QSFP-DD MSA/OSFP MSA
- \* Compliant with CMIS 4.0
- \* Optical connect duplex LC or MTP/MPO-16
- \* Up to 10km transmission
- \* Low power consumption
- \* RoHS compliant



## DAC

- \* With module SFP/QSFP/QSFP-DD/OSFP
- \* Data rate range from 10Gb/s to 400Gb/s
- \* Cable length optional
- \* DDM function optional
- \* Low power consumption
- \* Electrically hot-pluggable
- \* RoHS compliant



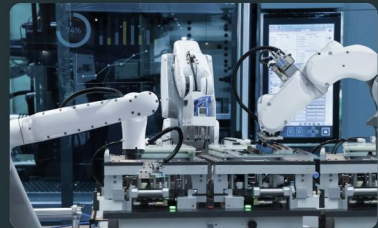
## AOC

- \* With module SFP/QSFP/QSFP-DD/OSFP
- \* Data rate range from 10Gb/s to 400Gb/s
- \* High Reliability 850nm VCSEL technology
- \* Cable length optional
- \* Electrically hot-pluggable
- \* RoHS compliant





**LINK-PP**



## **LINK-PP INT'L TECHNOLOGY CO., LIMITED**

HQ: No.54, South of Jinhua Road, ChengjiangTown,  
Zhongkai District. Huizhou City, Guangdong, 516229, China

**Summer Ming**

**Marketing Director & FAE**

C : +86 18026686530

Email: Min@link-pptech.com

Website: [www.link-pp.com](http://www.link-pp.com)